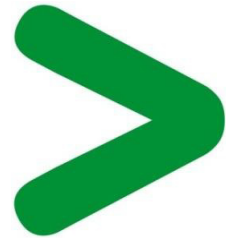


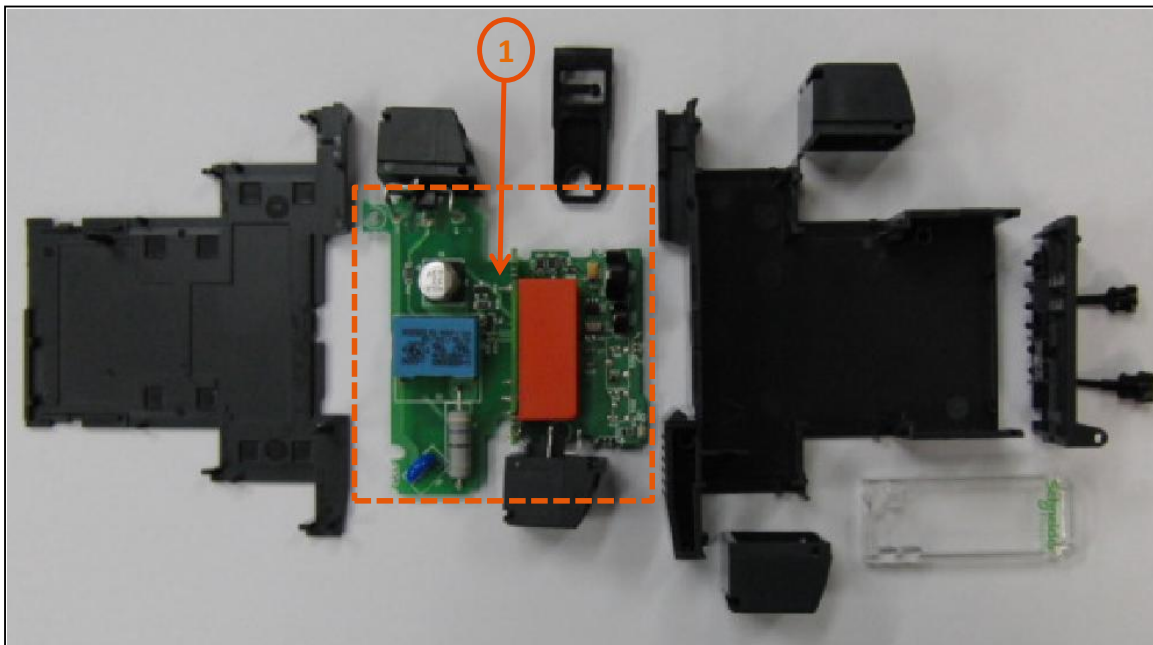
# Product End of Life Instructions

## Zelio RE17 Timing Relay





## End of Life Instructions



Recommendation	Number on drawing	Component / Material	Weight (in g)	Comment
To be depolluted	1	Electronic Board (Power) > 10cm <sup>2</sup>	20,8	2 pcs soldered together



## Product description

Manufacturer identification	Schneider Electric Industries SAS
Brand name	Schneider Electric
Product function	The product is a control relay with a time delay built in. The main purpose of the product is to time events in industrial automation system by closing or opening contacts before, during or after a set timing period.
Product reference	RE17RAMU
Additional similar product references	RE17RAMU RE17LAMW RE17LCBM RE17LHBM RE17LLBM RE17LMBM RE17RAMU RE17RBMU RE17RCMU RE17RHMU RE17RLJU RE17RLMU RE17RMEMU RE17RMJU RE17RMMU RE17RMMW RE17RMMWS RE17RMXMU RE10RMMU
Total representative product mass	67,73
Representative product dimensions	81mm x 72mm x 18mm
Accessories	0
Date of information release	09/2016



## Additional information

<b>Legal information</b>	The product family must be disposed according to the legislation of the country. This document is intended for use by end of life recyclers or treatment facilities. It provides the basic information to assure an appropriate end of life treatment for the components and materials of the product.	
<b>In case of special transportation: transportation method</b>	0	
<b>Recyclability potential</b>	<b>24%</b>	Based on "ECO'DEEE recyclability and recoverability calculation method" (version V1, 20 Sep. 2008 presented to the French Agency for Environment and Energy Management: ADEME).

Schneider Electric Industries SAS

Country Customer Care Center

<http://www2.schneider-electric.com/sites/corporate/en/support/operations/local-operations/local-operations.page>

35, rue Joseph Monier

CS 30323

F- 92506 Rueil Malmaison Cedex

RCS Nanterre 954 503 439

Capital social 896 313 776 €

[www.schneider-electric.com](http://www.schneider-electric.com)

ENVEOLI121113EN

Published by Schneider Electric

© 2016 - Schneider Electric – All rights reserved

09/2016