



Connected Switch 2AX
Zigbee default mode

41E2PBSWMZ-VW
PDL356PB2MBTZ-VW

Iconic® Connected Module

- 1 Follow the installation instructions

To change default device settings:

- 2 Download the Wiser™ by SE App
- 3 Connect the Iconic device
- 4 Configure the Iconic device

Works with



Customer care

Warranty information

We warrant this product for 2 years. See **Warranty** links below.

Schneider Electric (Australia) Pty Ltd
33-37 Port Wakefield Road, Gepps Cross SA 5094

Customer Care: 13 73 28

Email: customercare.au@se.com

Warranty:

<https://www.se.com/au/en/about-us/legal/terms-and-conditions.jsp>
www.se.com

Schneider Electric (NZ) Ltd

Building 6, 60 Highbrook Drive, East Tamaki, Auckland 2013

Customer Care: 0800 652 999

Email: sales@nz.schneider-electric.com

Warranty:

<https://www.se.com/nz/en/about-us/legal/terms-and-conditions.jsp>
www.se.com

For your safety

⚠️ DANGER

HAZARD OF ELECTRIC SHOCK, EXPLOSION, OR ARC FLASH

- It is illegal for persons other than an appropriately licensed electrical contractors or other persons authorised by legislation to work on the fixed wiring of any electrical installation.
- To comply with all safety standards, the device must be used only for the purpose described in this instruction and must be installed in accordance with the wiring rules and regulation in the location where it is installed.
- Lock out and tag the input circuit before accessing the wiring connections.
- The Locking Bar on the grids must be set to the Closed position to ensure that the device cannot be removed during normal operation.
- There are no user serviceable parts inside the device.

Failure to follow these instructions will result in death or serious injury.

⚠️ CAUTION

EQUIPMENT DAMAGE HAZARD

- Install the device according to instructions in this document.
- Pay attention to the specifications and wiring diagrams related to the installation.
- Do not use the device for any other purpose than specified in this instruction.
- Dropping the device may damage the internal components. Check that the device operates after being dropped or if physical damage is shown.

Failure to follow these instructions can result in injury or equipment damage.

NOTICE

EQUIPMENT DAMAGE HAZARD (LOAD AND OPERATION)

- Operation of the device at elevated temperatures or voltages outside of specification (240 V a.c. and 25 °C) may cause the over-temperature protection circuitry to operate.
- Reduce the size of the connected load or use a different brand of lamp to prevent recurrence.
- Do not operate the product for prolonged periods in extreme conditions.

Failure to follow these instructions can result in equipment damage.

NOTICE

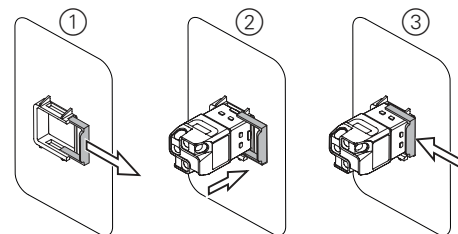
MAXIMUM LOAD RATINGS APPLY

Ensure that the number of low voltage lighting transformers connected to a single device does not exceed the maximum load rating of the device.

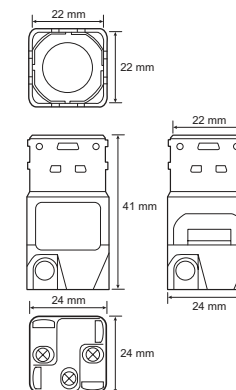
Failure to follow these instructions can result in equipment damage.

Installation

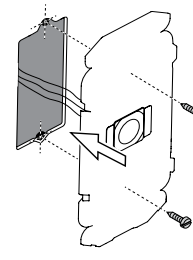
Fitting the module to the grid



Module dimensions

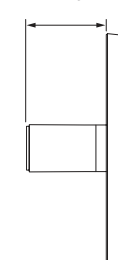


Mounting the grid

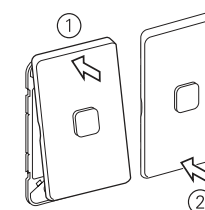


Wall box depth

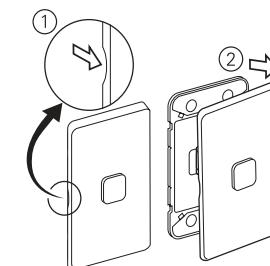
min. 40 mm



Installing the skin

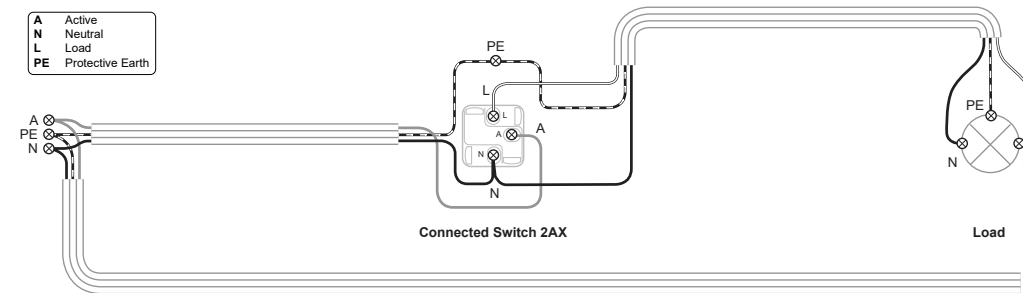


Removing the skin



Cabling and connections

(Typical installation using Iconic Connected Module)



NNZ65120

Configuring the module (optional)

General information

This product operates as a switch 'out-of-the-box', with no configuration needed.

The module can optionally be used as a device in a Wiser™ Hub network. The module must be paired with the Wiser Hub using the Wiser by SE App (see *Pairing* section below).

For information on using the module with the Wiser Hub, refer to the Wiser System User Guide — scan the QR code for your region.



AU

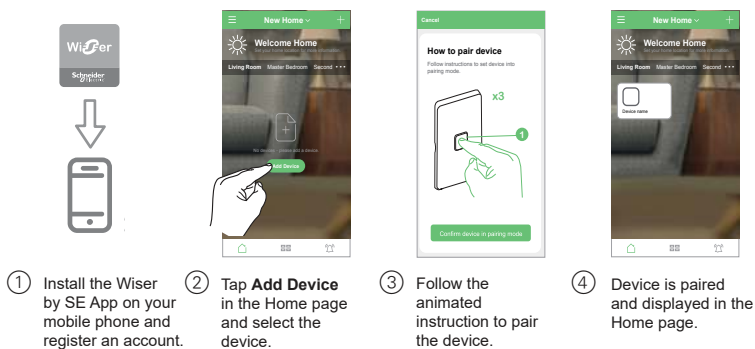


NZ

Pairing to the Wiser Hub

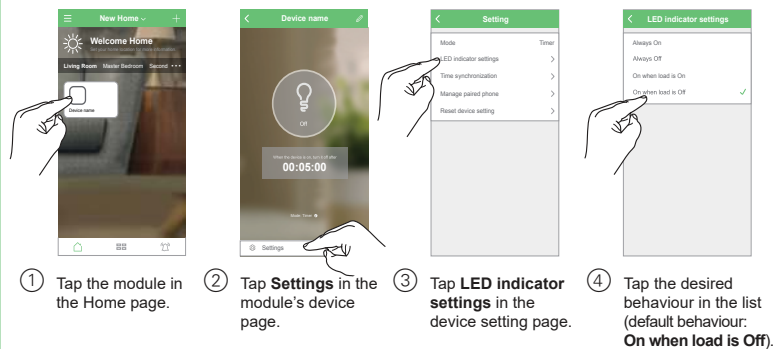
Notes:

- The Wiser Hub must first be commissioned using the Wiser by SE App. Refer to the Wiser System User Guide.
- When pairing, be in the same room and within a range of 8 to 10 m of the device being paired. Range can be affected by walls and other structures.



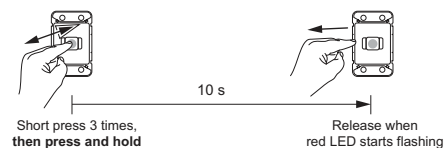
IMPORTANT: If you are unable to pair the device with the Wiser hub, please contact customer support.

Setting the LED indicator behaviour



Restoring the device to factory defaults

Note: All customised settings and pairing information will be lost. Before restoring, remove the skin in order to see the module LED indicator.



Technical data

Note: See product datasheet for full specifications.

| | | | |
|---------------------------------|---|------------------|--|
| Operating voltage | 220–240 V a.c., 50 Hz | | |
| Max load rating | 2 A. Refer to Load Compatibility table | | |
| Switching technique | Relay | | |
| Protection | Over temperature: | Yes | |
| | Short circuit: | No | |
| | Over-current fuse: | No | |
| | Thermal protection: | Yes | |
| LED indicator | Yes | | |
| Supported protocols | Zigbee (default), BLE | | |
| Multi-gang plate capacity | Max 6 primary mechs per plate | | |
| Compatible plate ranges | Iconic, Iconic Styl, Iconic Essence, Pro Series | | |
| Mounting centres | 84 mm pattern plate | | |
| Compliance | Safety: | AS/NZS 60669.2.1 | |
| | EMC: | AS/NZS 60669.2.1 | |
| | RF: | AS/NZS 4268 | |
| Environmental rating | IP20 (designed for indoor use only) | | |
| Operating humidity | 5%–90% RH, non-condensing | | |
| Specifications typical at 25 °C | | | |

Load compatibility

| | |
|---|--------------|
| Resistive load (e.g. incandescent lighting) | 2 A |
| MV halogen load | |
| Electronic LV lighting transformers | |
| LED lighting drivers | |
| Linear fluorescent ballasts | 2 A @ 0.6 PF |
| Inductive load (e.g. exhaust fan) | |
| M-rating | M.8 |

Disclaimer

Schneider Electric reserves the right to change specifications, modify designs and discontinue items without incurring obligation and whilst every effort is made to ensure that descriptions, specifications and other information in these instructions are correct, no warranty is given in respect thereof and the company shall not be liable for any error therein.

© Schneider Electric 2020

This material is copyright under Australian, New Zealand and international laws. Except as permitted under the relevant law, no part of this work may be reproduced by any process without prior written permission of and acknowledgment to Schneider Electric.

Android is a trademark of Google Inc.

Apple is a trademark of Apple Inc., registered in the U.S. and other countries.

Wiser™ is a trademark and the property of Schneider Electric SE, its subsidiaries and affiliated companies.

Zigbee® is a registered trademark of the Zigbee Alliance.